

DETAIL CABLE TRAYS & ACCESSORIES AND RACK ASSEMBLIES

PROJECT : TNEB NORTH CHENNAI



BHARAT HEAVY ELECTRICALS LTD.
TRANSMISSION BUSINESS GROUP
MATERIAL MANAGEMENT DEPT.
BHEL IOC, LODHI ROAD, NEW DELHI

110003

TITLE:

DETAIL OF CABLE TRAYS & RACK ASSEMBLY

SCALE : NTS

SHEET 01 OF 03

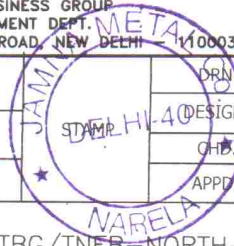
REV. 01

VENDOR NAME:

JAMNA METAL COMPANY
D-1513, DSIDC, NARELA
INDL. AREA, DELHI-110040

JMC DRAWING NO.

JMC/CT-RA/BHEL-TBG/TNEB-NORTH-CHENNAI/09/80 REV. 01



DRN

NAME PC

DESIGN

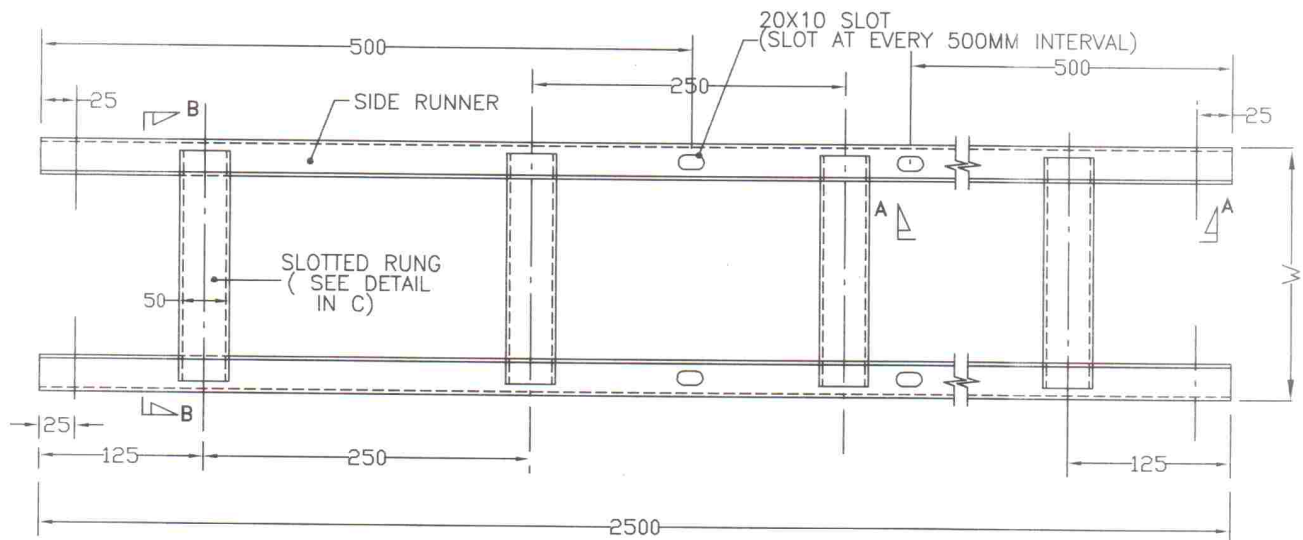
LALA RAM

CHK

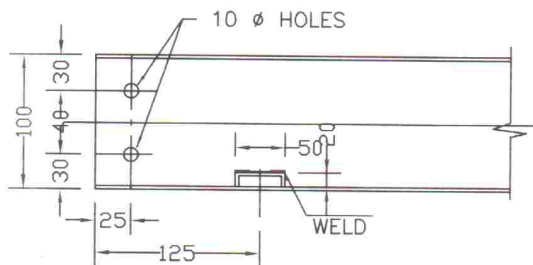
LALA RAM

APPD.

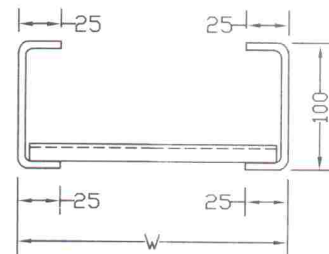
ARUN



LADDER TYPE CABLE TRAY

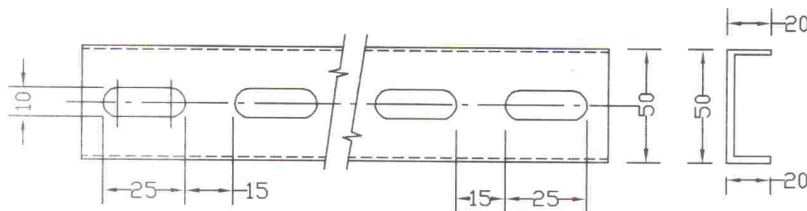


SEC - A-A

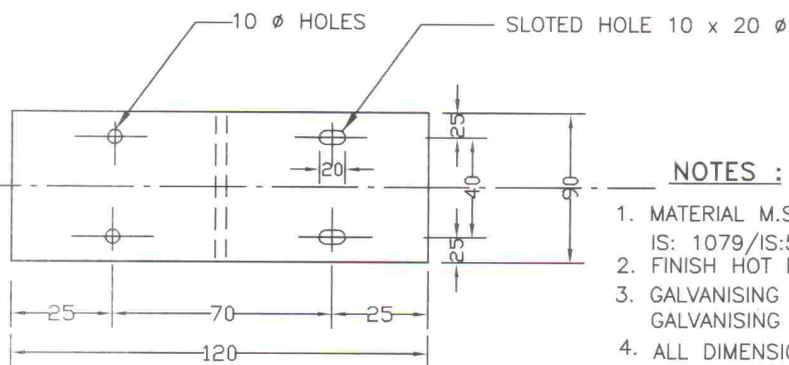


SEC -BB

**2.5mm THICK (100mm HIGH)
STRAIGHT LADDER TRAY**



**SLOTTED RUNG -C
(TO SUIT TRAY WIDTH)**



COUPLER PLATES 2.5MM THICK

NOTES :

1. MATERIAL M.S. SHEET 2.5 MM THICK AS PER IS: 1079/IS:5986/IS:513/IS:10748
2. FINISH HOT DIP GALVANISING AS PER IS:2629
3. GALVANISING THICKNESS SHALL BE 66 MICRONS. AND GALVANISING COATING 460 GM/SQ. MTR.
4. ALL DIMENSIONS ARE IN MM.

SL NO.	TRAY WIDTH W(MM)	TRAY HEIGHT H(MM.)	THICKNES (T)
1.	600MM	100MM	2.5MM
2.	300MM	100MM	2.5MM

LADDER TYPE CABLE TRAY



**LADDER TYPE CABLE TRAY &
ACCESSORIES**

SUPPLIER :
JAMNA METAL COMPANY
D-1513, DSIDC,
NARELA INDL AREA, DELHI -40

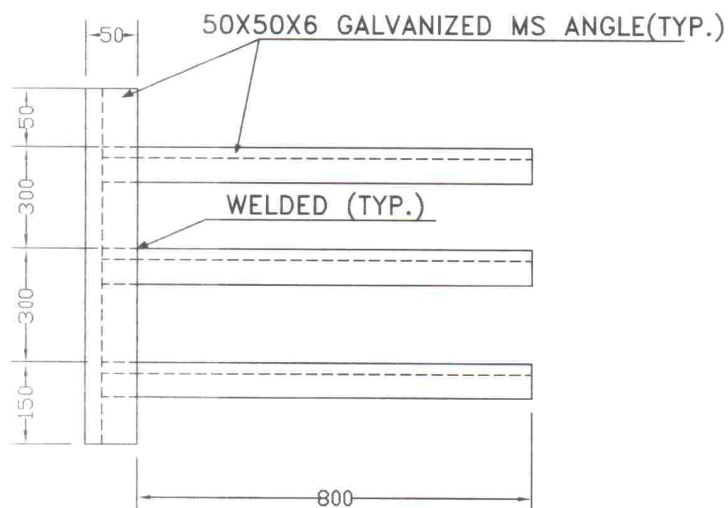


FIG. - 1

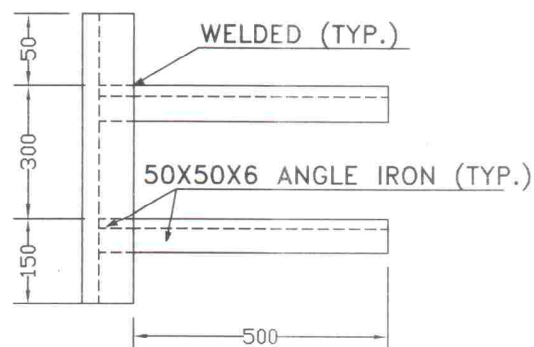


FIG. - 2

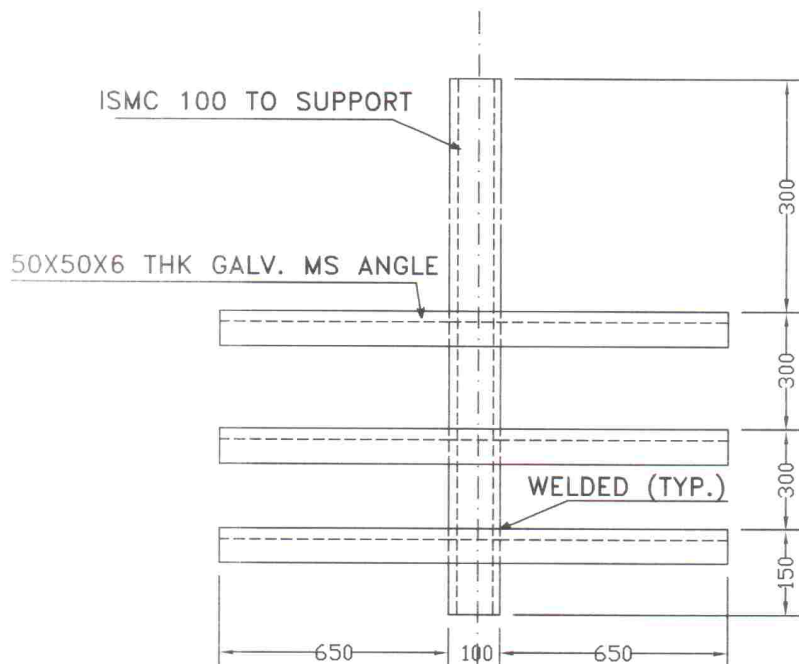


FIG. - 3

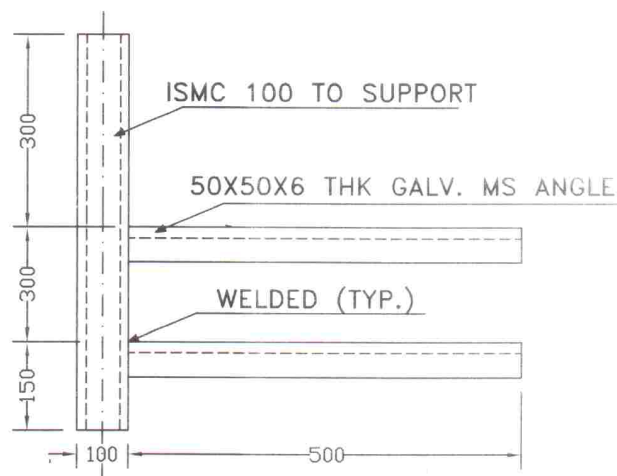


FIG. - 4

NOTES :-

1. ALL DIMENSIONS ARE IN MM UNLESS OTHERWISE SPECIFIED.
2. GALVANIZING THICKNESS SHALL BE 75 MICRONS. AND GALVANIZING COATING 610 GM/SQ. MTR.
3. CABLE RACK ASSEMBLIES SHALL BE FABRICATED AS PER IS:1079 GRADE "0" IS:2026 GRADE "A" OTHERWISE SPECIFIED.
4. CABLE RACK ASSEMBLIES SHALL BE HOT-DIP GALVANIZED AS PER IS:2629
5. FABRICATED TOLERANCE ± 5 MM TO BE ALLOWED.
6. TOLERANCE ON THICKNESS ± 0.2 MM TO BE ALLOWED OTHERWISE SPECIFIED.
7. TOLERANCE ON DIMENSION AS PER IS:1852.



RACK ASSEMBLY FOR TNEB NORTH CHENNAI PROJECT

SUPPLIER :
JAMNA METAL COMPANY
D-1513, DSIDC,
NARELA INDL. AREA, DELHI - 40